

CERAMENT® BONE VOID FILLER



Re-revision of a Failed THA Revision Using CERAMENT BONE VOID FILLER

A. J. Wassef, MD, USA



PATIENT

81 year old

PATIENT HISTORY

- Underwent a primary left THA 25 years prior.
- Post original operation, patient experienced multiple dislocations and a grinding sensation.
- Original THA showed significant pelvic osteolysis and severe eccentric poly wear.
- Patient underwent an initial revision with another surgeon who placed a jumbo cup and used an entire femoral head allograft for bone grafting of the defect.

DIAGNOSIS

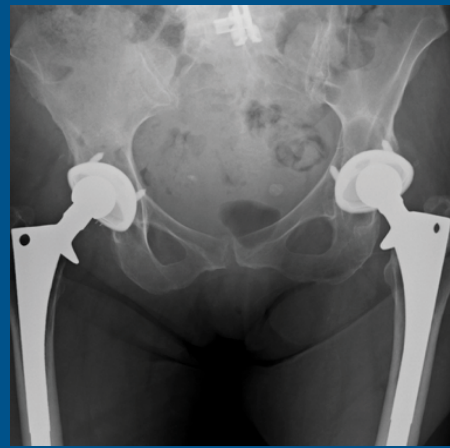
- Failure of the initial left THA revision.
- 3-months post initial revision, patient presented with protrusio of the acetabular component with pelvic discontinuity and severe pain.

TREATMENT

- Complex revision left THA with acetabular bone grafting using CERAMENT BONE VOID FILLER to reconstitute the medial wall.
- Pelvic cage reconstruction for structural support and CERAMENT BONE VOID FILLER for bone grafting.

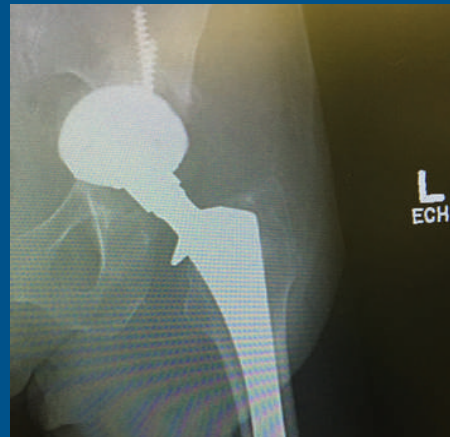
OUTCOME

- Patient was placed in hip spica brace and toe touch weight bearing for 6 weeks followed by 50% weight bearing for another 6 weeks.
- At 8-month follow up, much of the CERAMENT BONE VOID FILLER has been resorbed and excellent reconstitution of the medial wall is visible.
- At 2-year follow up, patient is doing well and bone remodeling is seen where CERAMENT BONE VOID FILLER had been injected.



Original 25 year old prior revision.

Significant pelvic osteolysis and severe eccentric poly wear.



3 month post initial revision.

Shows complete protrusio and a large acetabular defect.



Intra-op.

Complete anterior column deficiency and pelvic discontinuity. Placed pelvic cage for structural support and completely backfilled the absent medial wall with CERAMENT.



2 Month follow up.

CERAMENT is clearly visible.

FOLLOW UP RADIOGRAPHS



2 Month follow up.



8 Month follow up.



8 Month follow up.



2 Year follow up.



2 Year follow up.

Availability of CERAMENT® is dependent on its regulatory status in individual markets, contact your local representative.

For complete product information, including indications, contraindications, warnings, precautions and potential adverse events, see package insert.



BONESUPPORT AB Ideon
Science Park, Scheelevägen 19
SE-223 70 Lund, Sweden

BONESUPPORT US
117 Fourth Ave, Suite 202
Needham, MA 02494

T: +46 46 286 53 70
F: +46 46 286 53 71
E: info@bonesupport.com

T: 1.877.719.6718
E: us.sales@bonesupport.com
www.bonesupport.com