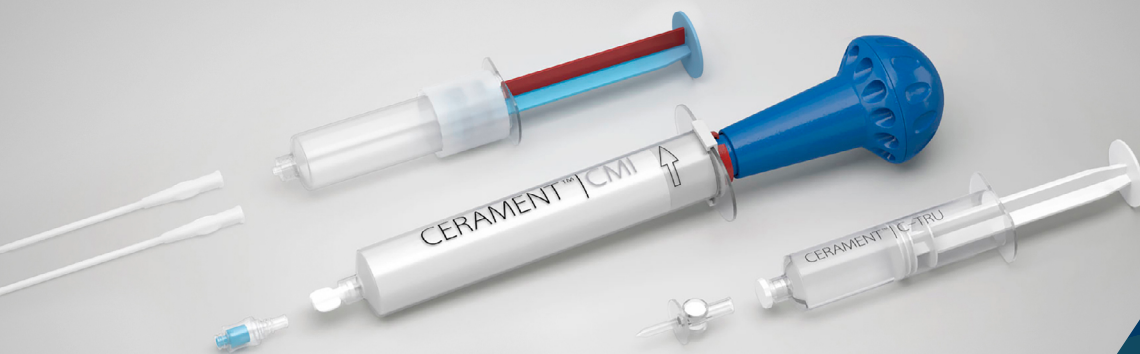


## CERAMENT® BONE VOID FILLER



Revision of a Failed THA Revision  
Using CERAMENT BONE VOID FILLER  
to Reconstitute Medial Wall

A. J. Wassef, MD, USA



## PATIENT

81 year old

## PATIENT HISTORY

- Underwent a primary left THA about 25 years prior.
- Post original operation, patient experienced multiple dislocations and a grinding sensation.
- Original THA showed significant pelvic osteolysis and severe eccentric poly wear.
- Patient underwent an initial revision with another surgeon who placed a jumbo cup and used an entire femoral head allograft for bone grafting of the defect.

## DIAGNOSIS

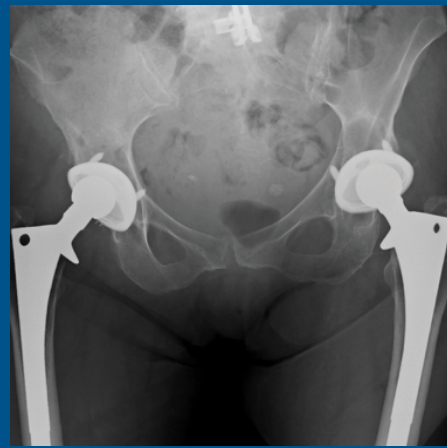
- Failure of the initial left THA revision.
- 3-months post initial revision, patient presented with protrusio of the acetabular component with pelvic discontinuity and severe pain.

## TREATMENT

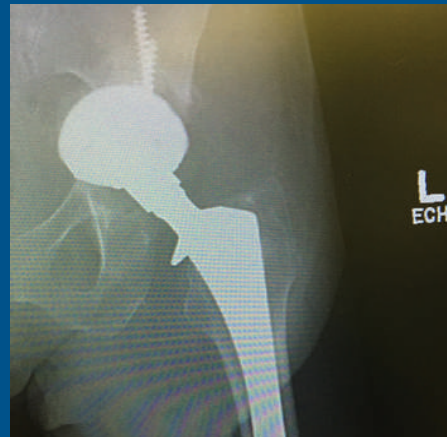
- Complex revision left THA with acetabular bone grafting using CERAMENT BONE VOID FILLER to reconstitute the medial wall.
- Pelvic cage reconstruction for structural support and CERAMENT BONE VOID FILLER for bone grafting.

## OUTCOME

- Patient was placed in hip spica brace and toe touch weight bearing for 6 weeks followed by 50% weight bearing for another 6 weeks.
- At 8-month follow up, much of the CERAMENT BONE VOID FILLER has been resorbed and excellent reconstitution of the medial wall is visible.
- At 2-year follow up, patient is doing well and bone remodeling is seen where CERAMENT BONE VOID FILLER had been injected.



**Original 25 year old prior revision.**  
Significant pelvic osteolysis and severe eccentric poly wear.



**3 month post initial revision.**  
Shows complete protrusio and a large acetabular defect.

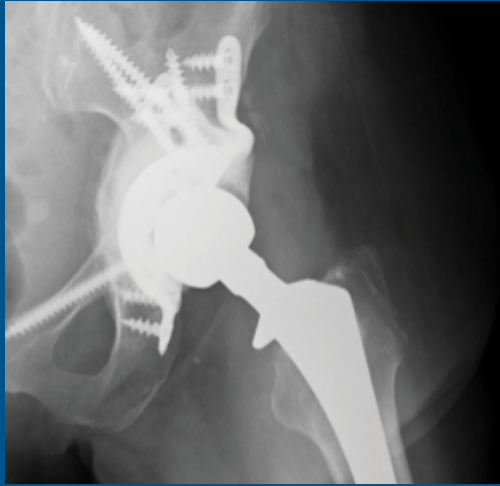


**Intra-op.**  
Complete anterior column deficiency and pelvic discontinuity. Placed pelvic cage for structural support and completely backfilled the absent medial wall with CERAMENT.

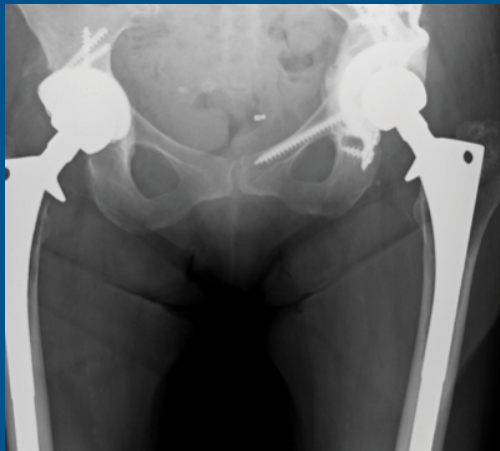


**2 Month follow up.**  
CERAMENT is clearly visible.

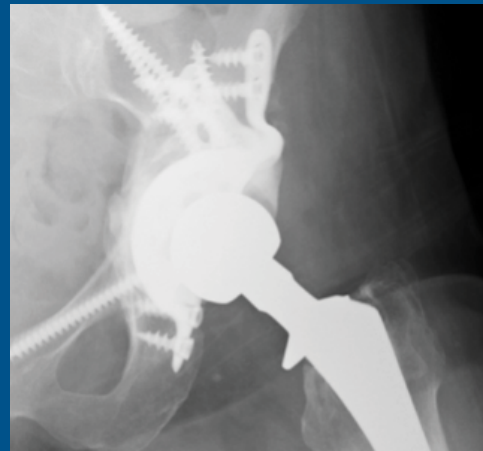
## FOLLOW UP RADIOGRAPHS



2 Month follow up.



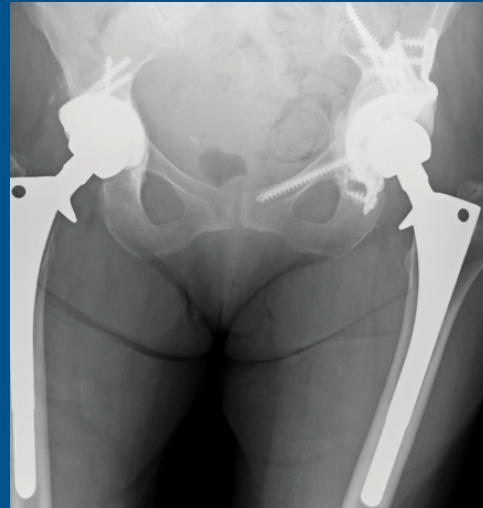
8 Month follow up.



8 Month follow up.



2 Year follow up.



2 Year follow up.



Our Mission is restoring health to improve the quality of life for patients with bone disorders.

BONESUPPORT AB  
Ideon Science Park,  
Scheelevägen 19  
SE-223 70 Lund, Sweden

BONESUPPORT, INC.,  
60 William St, Suite 330  
Wellesley, MA 02481

T: +46 46 286 53 70  
F: +46 46 286 53 71  
E: [info@bonesupport.com](mailto:info@bonesupport.com)

T: 1.877.719.6718  
E: [us.sales@bonesupport.com](mailto:us.sales@bonesupport.com)  
[www.bonesupport.com](http://www.bonesupport.com)