

Medical Education Series

Calcaneus Fracture with UBC

Dr. Landon Fine, D.O.
Parker, Colorado



PATIENT HISTORY

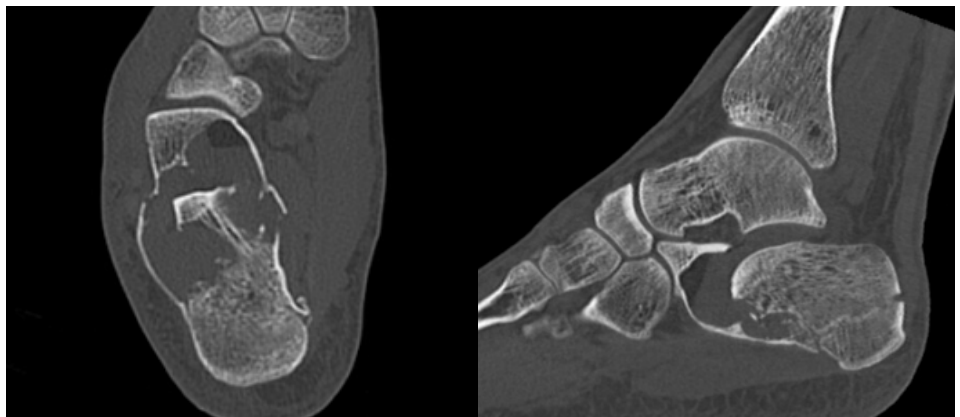
A 22 year old healthy male, serving in the armed forces, suffered right heel pain after jumping over a handrail. Pain in heel was severe and the patient was unable to walk.

DIAGNOSIS

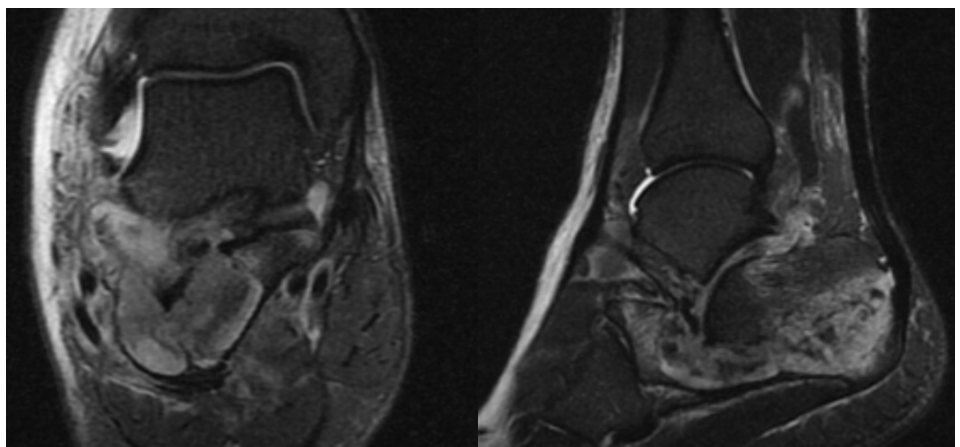
Imaging showed a large lytic lesion involving the majority of the calcaneus with overlying acute displaced intraarticular fracture. Patient was diagnosed with a pathologic calcaneus fracture as a result of a unicameral bone cyst (UBC).

TREATMENT PLAN

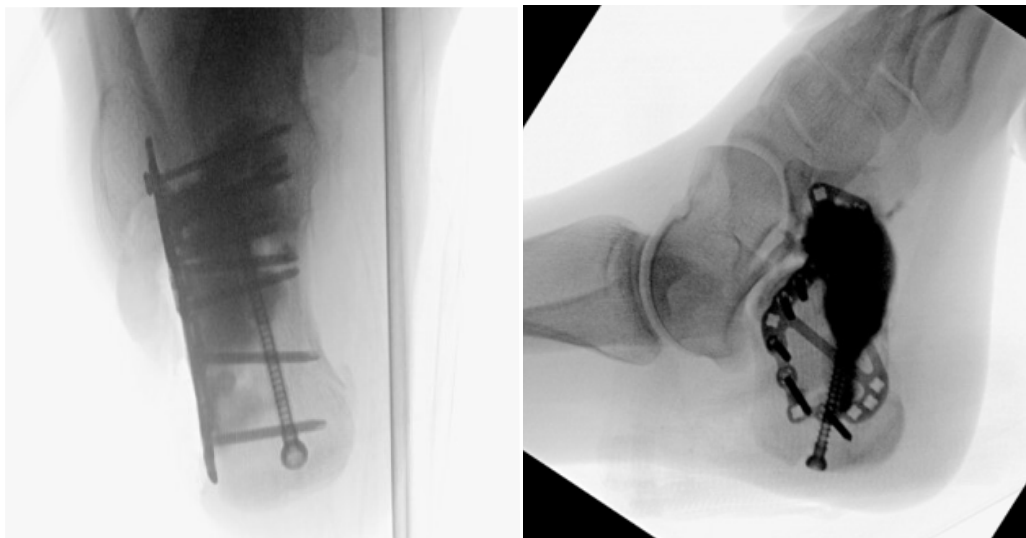
- Surgical treatment included curettage of the cyst using the Avitus® Bone Harvester through an extensile lateral approach. This facilitated efficient and thorough debridement through the cortical opening without passing in and out of the surgical site. After complete removal of cystic material, a large bone void remained.
- An ORIF was performed and backfilled with 18mL of CERAMENT, using provided tip extenders. The radio visibility of CERAMENT allowed real-time visualization to ensure complete filling of the void.
- Within 15 minutes, CERAMENT had hardened to allow removal of reduction maneuvers and fill plate holes. CERAMENT provided good fixation under the posterior facet, the anterior process and around the periphery.



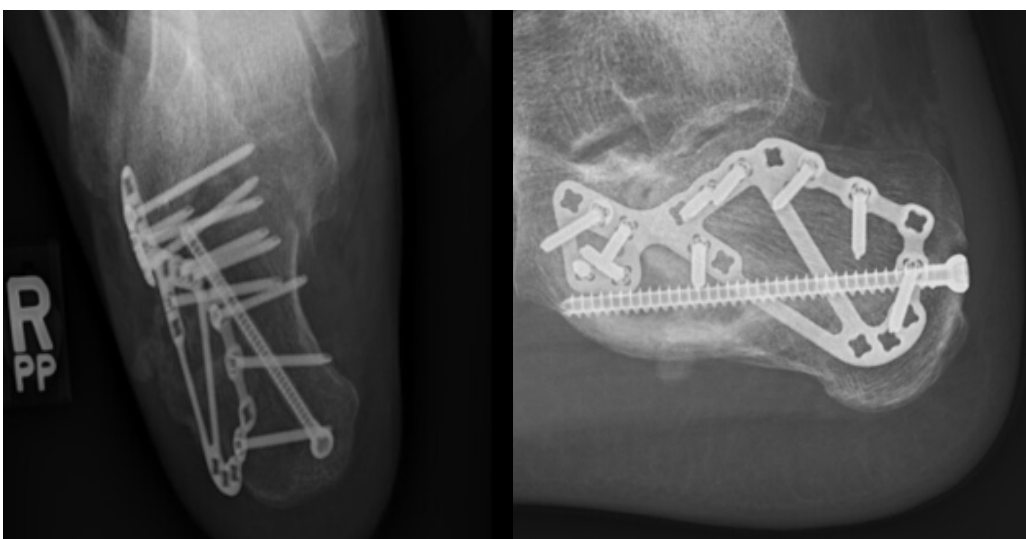
Pre-op CT scans showing large lytic lesion in most of the calcaneus with overlying acute displaced intraarticular fracture.



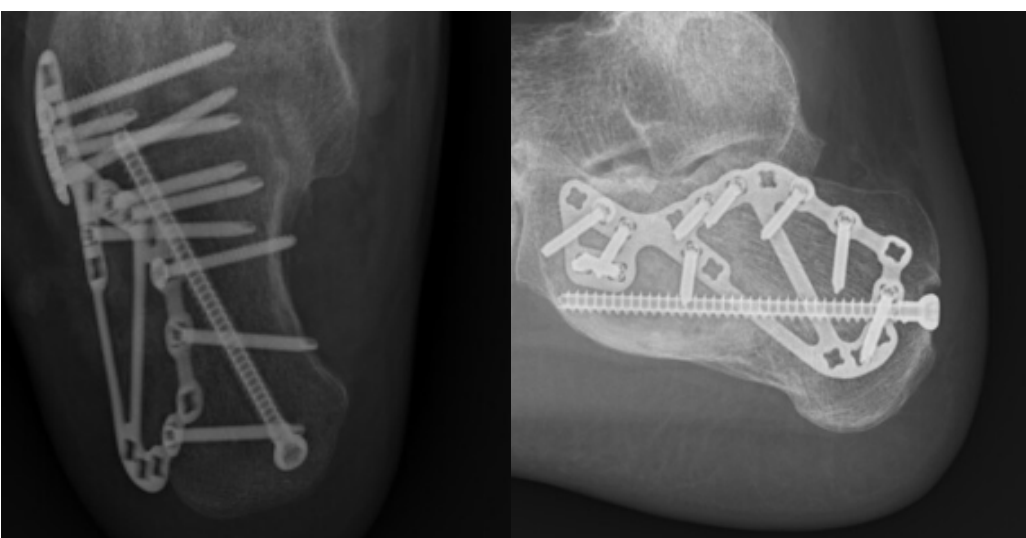
Pre-op MRI slices of the UBC of the calcaneus.



Intra-op radiographs of final ORIF construct showing defect filled with CERAMENT.



Follow up radiographs at 6 Week post-op.



12 week post-op radiographs demonstrating early bone remodeling where CERAMENT has been implanted.

OUTCOME

- CERAMENT provided excellent and complete fill of the large cyst with good fixation for plates and screws to support early bone remodeling.
- At 12 weeks post-op, the patient is doing well with no pain and returned to normal activities. Patient will complete military physical and return to full service.



BONESUPPORT AB
Ideon Science Park,
Scheelevägen 19
SE-223 70 Lund,
Sweden

T: +46 46 286 53 70
F: +46 46 286 53 71
E: info@bonesupport.com

BONESUPPORT, INC.,
60 William St, Suite 330
Wellesley, MA 02481

T: 1.877.719.6718
E: us.sales@bonesupport.com
W: bonesupport.com

