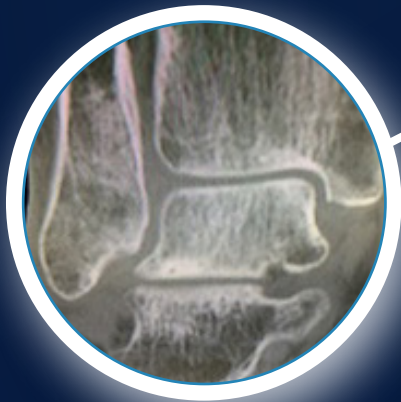


Medical Education Series

# Osteochondral Lesion of the Talus

Mihir M. Patel, MD



### DIAGNOSIS

52 year old patient was diagnosed with symptomatic osteochondral lesion of the Talus.



**Figure 1.** T2 MRI Image of OCD Lesion



**Figure 2.** Retrograde drilling of the OCD Lesion

### TREATMENT PLAN

- The overlying cartilage was intact, so the patient underwent retrograde drilling of the OCD lesion, core decompression, and filling of the bone marrow lesion and drill track with 1.5cc of CERAMENT BONE VOID FILLER.
- The goal of CERAMENT was to fill the bone voids and allow for the remodeling of bone.



**Figure 3.** Voids at lesion and drill track are filled with CERAMENT

## OUTCOME

Post-operative CT scans showed the bone graft incorporating into the talus and bone remodeling where CERAMENT had been injected.



**Figure 4.** Final intraoperative image



**Figure 5.** CT Scan at 4 months post-op



**“CERAMENT remodels into bone.”**

- Mihir M. Patel, MD



BONESUPPORT, INC.,  
60 William St, Suite 330  
Wellesley, MA 02481

T: 1.877.719.6718  
E: [us.sales@bonesupport.com](mailto:us.sales@bonesupport.com)  
W: [bonesupport.com](http://bonesupport.com)