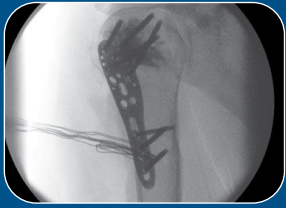
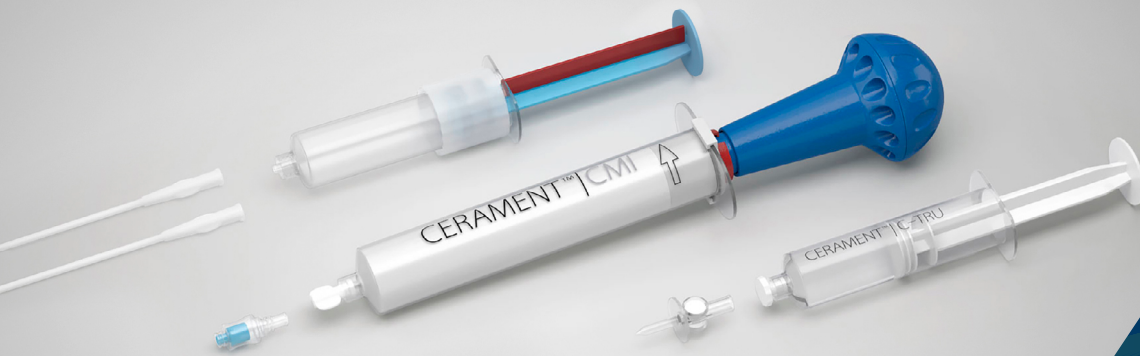


CERAMENT® BONE VOID FILLER



Treatment of a Proximal Humerus Fracture with CERAMENT BONE VOID FILLER

Dr. M. Van Der Elst, The Netherlands



PATIENT
47 year old

DIAGNOSIS

Proximal humerus fracture (AO Type 11-C) sustained during a fight (Figs. 1, 2).

TREATMENT

- The fracture was reduced and fixed using a Philos plate (Synthes®) and the cuff was attached to the plate using nonabsorbable sutures (Ticron®).
- The bony defect was filled with 6cc CERAMENT BONE VOID FILLER under continuous fluoroscopy (Figs. 3, 4) and allowed to set for 15 minutes.

OUTCOME

- The fracture healed uneventfully. The patient recovered good range of motion:
 - abduction: 100°
 - flexion: 100°
 - external rotation: 45°
 - internal rotation: 45°
- X-rays at 12 months post-op demonstrate fracture healing with remodeling of CERAMENT BONE VOID FILLER into trabecular bone (Figs. 5, 6).

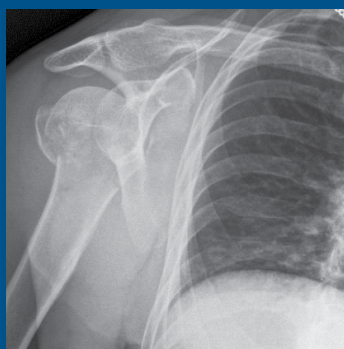


Figure 1.

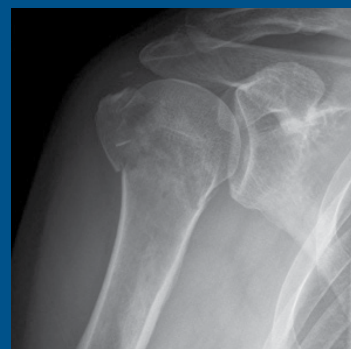


Figure 2.



Figure 3.



Figure 4.



Figure 5.

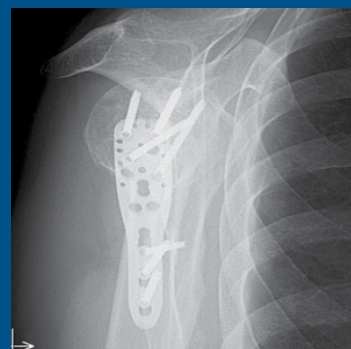


Figure 6.



BONESUPPORT AB
Ideon Science Park,
Scheelevägen 19
SE-223 70 Lund, Sweden

T: +46 46 286 53 70
F: +46 46 286 53 71
E: info@bonesupport.com

Our Mission is restoring health
to improve the quality of life for
patients with bone disorders.

BONESUPPORT, INC.,
60 William St, Suite 330
Wellesley, MA 02481

T: 1.877.719.6718
E: us.sales@bonesupport.com
www.bonesupport.com