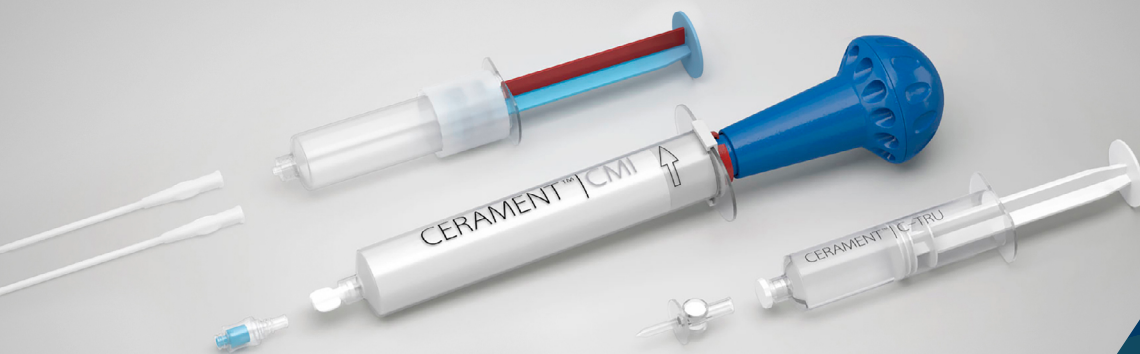


CERAMENT® BONE VOID FILLER



Revision of a Failed THA Revision
Using CERAMENT BONE VOID FILLER
to Reconstitute Medial Wall

A. J. Wassef, MD, USA



PATIENT

81 year old

PATIENT HISTORY

- Underwent a primary left THA about 25 years prior.
- Post original operation, patient experienced multiple dislocations and a grinding sensation.
- Original THA showed significant pelvic osteolysis and severe eccentric poly wear.
- Patient underwent an initial revision with another surgeon who placed a jumbo cup and used an entire femoral head allograft for bone grafting of the defect.

DIAGNOSIS

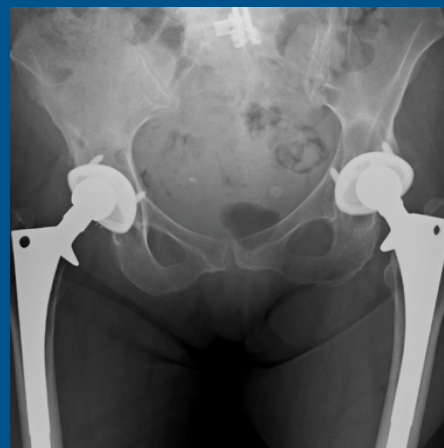
- Failure of the initial left THA revision.
- 3-months post initial revision, patient presented with protrusio of the acetabular component with pelvic discontinuity and severe pain.

TREATMENT

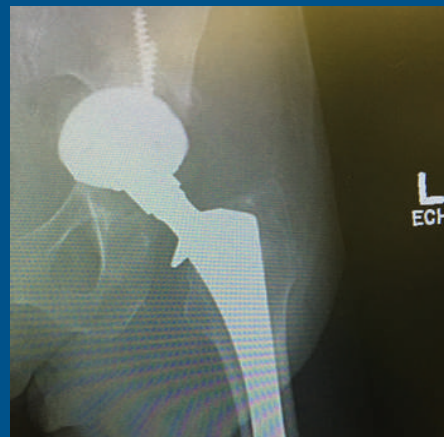
- Complex revision left THA with acetabular bone grafting using CERAMENT BONE VOID FILLER to reconstitute the medial wall.
- Pelvic cage reconstruction for structural support and CERAMENT BONE VOID FILLER for bone grafting.

OUTCOME

- Patient was placed in hip spica brace and toe touch weight bearing for 6 weeks followed by 50% weight bearing for another 6 weeks.
- At 8-month follow up, much of the CERAMENT BONE VOID FILLER has been resorbed and excellent reconstitution of the medial wall is visible.
- At 2-year follow up, patient is doing well and bone remodeling is seen where CERAMENT BONE VOID FILLER had been injected.



Original 25 year old prior revision.
Significant pelvic osteolysis and severe eccentric poly wear.



3 month post initial revision.
Shows complete protrusio and a large acetabular defect.

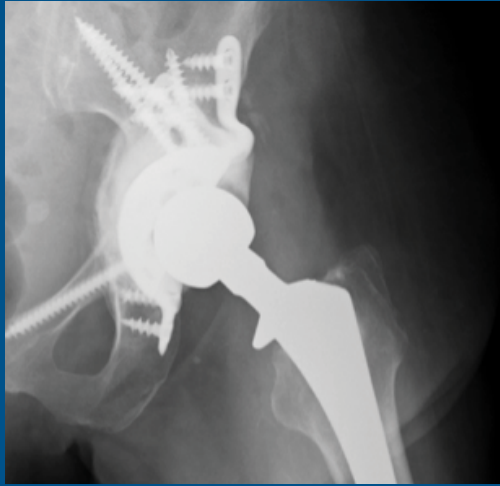


Intra-op.
Complete anterior column deficiency and pelvic discontinuity. Placed pelvic cage for structural support and completely backfilled the absent medial wall with CERAMENT.

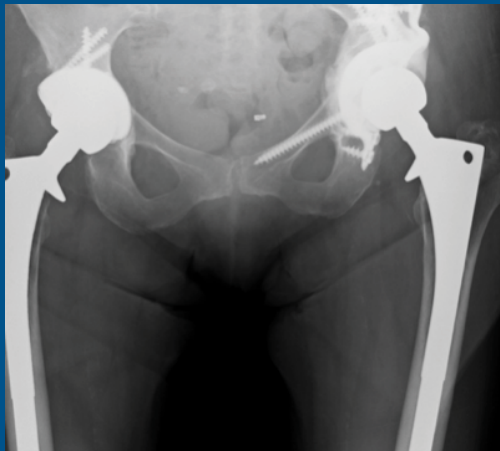


2 Month follow up.
CERAMENT is clearly visible.

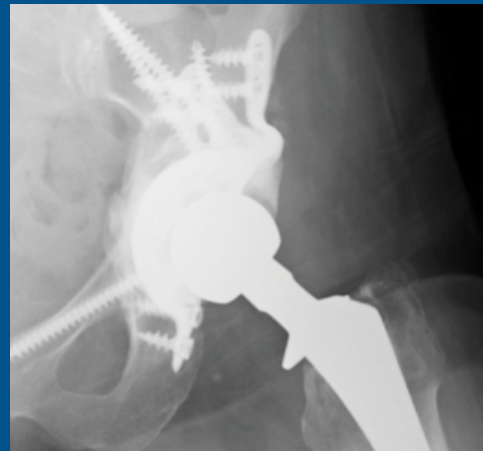
FOLLOW UP RADIOGRAPHS



2 Month follow up.



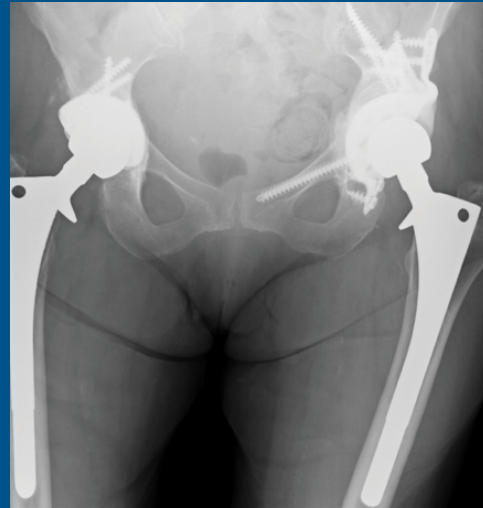
8 Month follow up.



8 Month follow up.



2 Year follow up.



2 Year follow up.



BONESUPPORT AB
Ideon Science Park,
Scheelevägen 19
SE-223 70 Lund, Sweden

T: +46 46 286 53 70
F: +46 46 286 53 71
E: info@bonesupport.com

Our Mission is restoring health
to improve the quality of life for
patients with bone disorders.

BONESUPPORT, INC.,
60 William St, Suite 330
Wellesley, MA 02481

T: 1.877.719.6718
E: us.sales@bonesupport.com
www.bonesupport.com