

Medical Education Series

Treatment of an Osteoporotic Proximal Humerus Fracture

Dr. M. Van Der Elst
The Netherlands



CERAMENT®

BONE VOID FILLER

OSTEOPOROTIC PROXIMAL HUMERUS FRACTURE

PATIENT AND DIAGNOSIS

62 year old with established osteoporosis. Proximal humerus fracture- dislocation (AO Type 11-C) as a result of a fall from a bike (Figs. 1, 2).

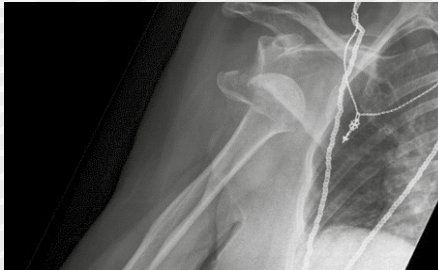


Figure 1.



Figure 2.

TREATMENT

The fracture was reduced and fixed using a Philos plate (Synthes®) and the cuff was attached to the plate using non-resorbable sutures (Ticron®).

The bony defect was filled with 6cc CERAMENT BONE VOID FILLER (BVF) under continuous fluoroscopy (Fig. 3) and allowed to set for 15 minutes.



Figure 3.

OUTCOME

The fracture healed uneventfully, and the patient recovered good range of motion:

- abduction: 80°
- flexion: 90°
- external rotation: 60°
- internal rotation: 40°

X-rays at 12 months post-op demonstrate fracture healing and remodeling of CERAMENT BVF into trabecular bone (Figs. 4, 5).

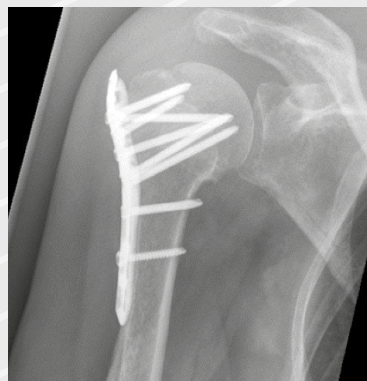


Figure 4.

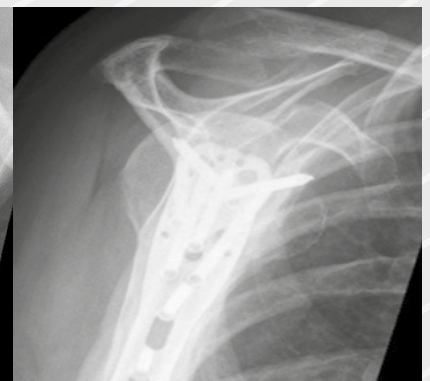


Figure 5.



BONESUPPORT AB
Ideon Science Park,
Scheelevägen 19
SE-223 70 Lund,
Sweden

T: +46 46 286 53 70
F: +46 46 286 53 71
E: info@bonesupport.com

BONESUPPORT, INC
60 William St, Suite 330
Wellesley, MA 02481

T: 1.877.719.6718
E: us.sales@bonesupport.com
W: bonesupport.com