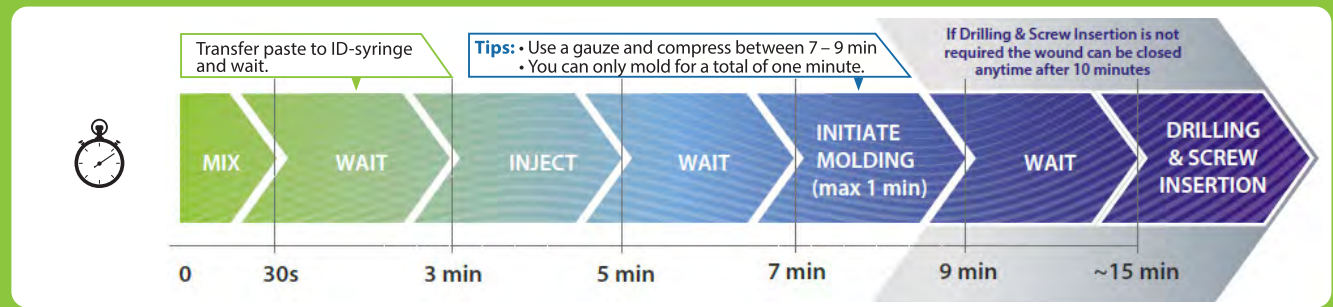
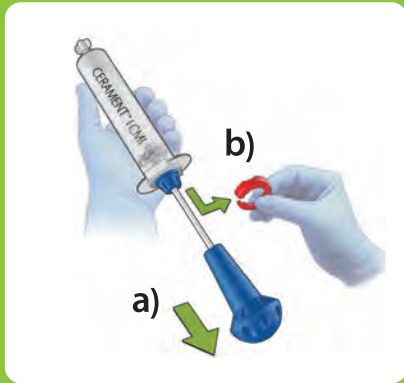


CERAMENT® BONE VOID FILLER

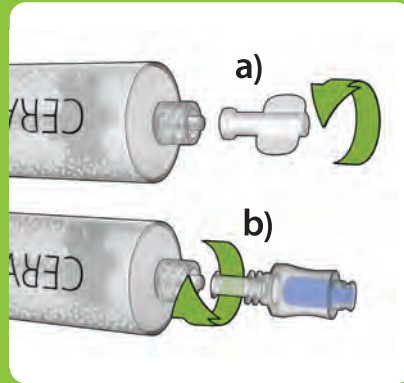


1



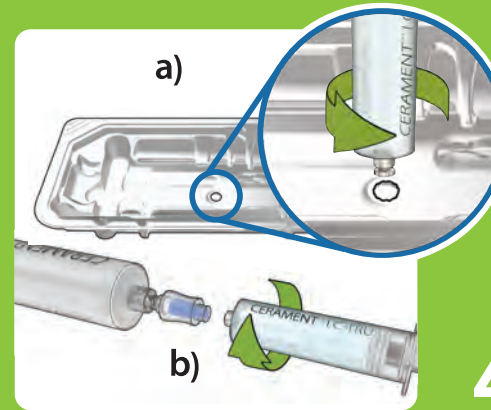
- Retract the blue handle and remove the red plunger stop ring.

2



- a) Remove the plug.
- b) Attach valve, clear end to the powder filled syringe, and turn clockwise.

3



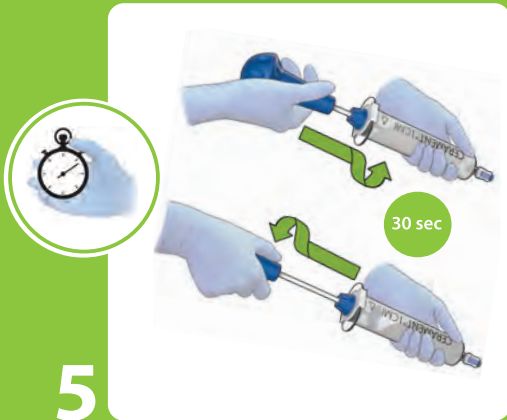
- a) Remove the plug from the liquid filled syringe using the tool embedded in the blister tray bottom, push and turn counter-clockwise.
- b) Attach the the liquid filled syringe to the blue valve by turning it clockwise.

4



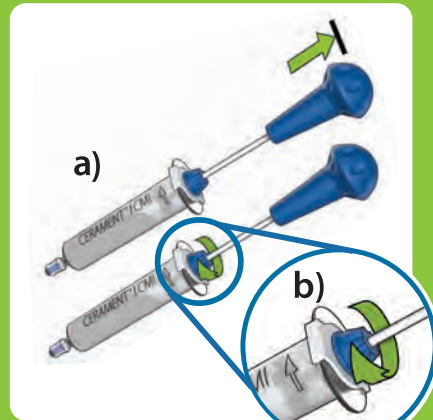
- Inject all liquid into the syringe with the powder.
- Keep the plunger pushed to the bottom to avoid back flush.
- Detach the syringe from the valve.

5



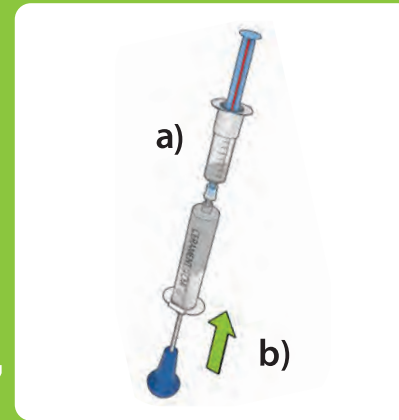
- After the liquid has been injected, start the stopwatch immediately.
- Mix with rotation for 30 seconds, at 1 complete stroke per second.
- Push the handle all the way down and pull it all the way up, and rotate at its end positions.

6



- a) Fully retract blue handle.
- b) Lock plunger by turning blue collar clockwise to click.

7



- a) Attach dispensing syringe to valve.
- b) Transfer paste with numbers facing user. When full, paste will begin to ooze from under sleeve. Stop filling when this occurs.

8



- Do not remove the red stopper until ready to inject.

ADDITIONAL RESOURCES:
Review our mixing video here:

