



Case Report:

Revision of a failed THA revision using
CERAMENT® | BONE VOID FILLER to reconstitute
medial wall

Andrew J. Wassef, MD
Lakewood, CA, USA



Revision of a failed THA revision using CERAMENT®|BONE VOID FILLER to reconstitute medial wall

PATIENT: 81 year old female

PATIENT HISTORY

- ➔ Underwent a primary left THA about 25 years prior
- ➔ Post original operation, patient experienced multiple dislocations and a grinding sensation
- ➔ Original THA showed significant pelvic osteolysis and severe eccentric poly wear
- ➔ Patient underwent an initial revision with another surgeon who placed a jumbo cup and used an entire femoral head allograft for bone grafting of the defect

DIAGNOSIS

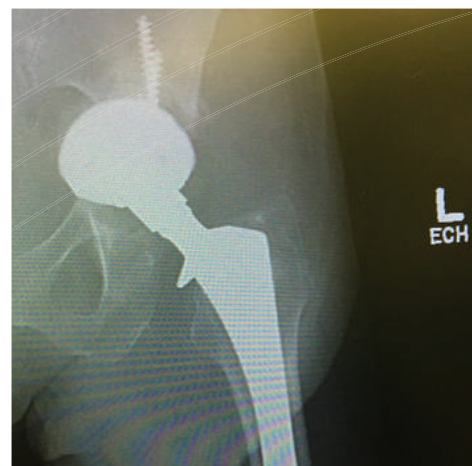
- ➔ Failure of the initial left THA revision
- ➔ 3-months post initial revision, patient presented with protrusion of the acetabular component with pelvic discontinuity and severe pain

TREATMENT

- ➔ Complex revision left THA with acetabular bone grafting using CERAMENT BONE VOID FILLER (BVF) to reconstitute the medial wall
- ➔ Pelvic cage reconstruction for structural support and CERAMENT BVF for bone grafting.



Original 25 year old prior revision
Significant pelvic osteolysis and severe eccentric poly wear



3 month post initial revision
Shows complete protrusion and a large acetabular defect

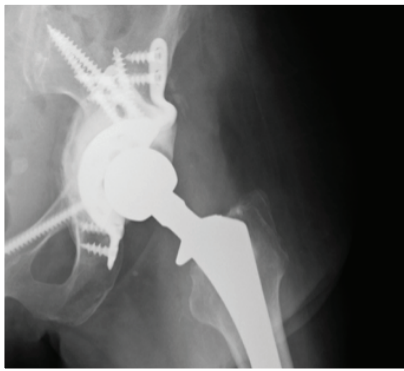


Intra-op
Complete anterior column deficiency and pelvic discontinuity. Placed pelvic cage for structural support and completely backfilled the absent medial wall with CERAMENT

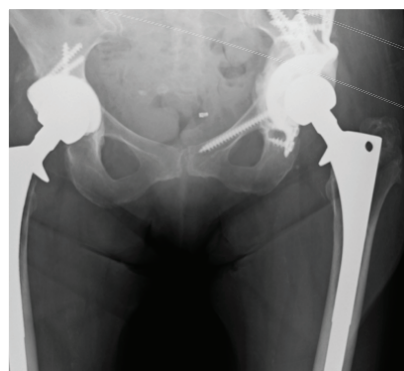


2 Month follow up
CERAMENT is clearly visible

FOLLOW UP RADIOGRAPHS



2 Month follow up



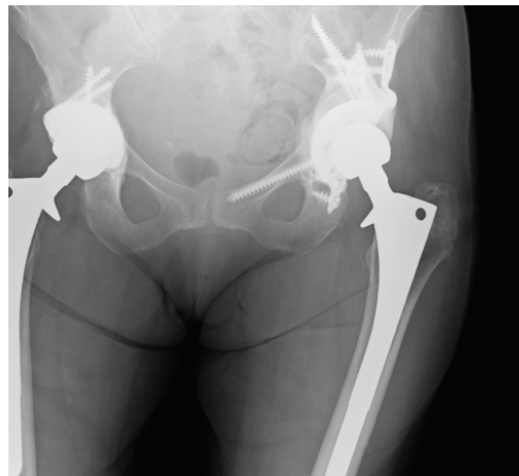
8 Month follow up



8 Month follow up



2 Year follow up



2 Year follow up

OUTCOMES

- Patient was placed in hip spica brace and toe touch weight bearing for 6 weeks followed by 50% weight bearing for another 6 weeks.
- At 8-month follow up, much of the CERAMENT BVF has been resorbed and excellent reconstitution of the medial wall is visible
- At 2-year follow up, patient is doing well and bone remodeling is seen where CERAMENT BVF had been injected.



Restoring health to improve the
quality of life for patients with
bone disorders.

BONESUPPORT, INC.,
60 William St, Suite 330, Wellesley, MA 02481

T: 1.877.719.6718 www.bonesupport.com